

DISCOVER THE ARTS IN PHILADELPHIA



ART SURROUNDS YOU IN PHILADELPHIA

Art is a vital component to any Philadelphia visit. Reaching far beyond the walls of our famed museums, art accompanies you down the street and into our parks and open spaces through sculptures, architecture, and murals.

FROM FREE ART...

Philadelphia began integrating art into public spaces as early as the 1700s, when the city served as the nation's first capital. With the establishment of the Association for Public Art in 1872, the collection expanded significantly. Philadelphia continues to pioneer groundbreaking models for creating accessible art that has been replicated in other cities across the country.



Philadelphia Muses by Meg Saligman, 1999.

In 1872, Philadelphia became the first U.S. city to establish a private nonprofit citizens organization – **Association for Public Art** (aPA) – to make art accessible to all. This commitment has led to thousands of sculptures and murals throughout the city.

Mural Capital of the World - what started as an anti-graffiti program in 1984, Mural Arts Philadelphia grew to be an international leader with over 4,000 works of community-based public art.



Although you may not know Julian Abele by name, chances are, you're familiar with at least one of his timeless architectural creations, including the Philadelphia Museum of Art.

TO FINE ART!



From the first art museum in the U.S. to the world's largest private collection of impressionist, post-impressionist, and early modern paintings, Philadelphia will inspire the art lover in you.

Designed by the American architects Frank Furness and George W. Hewitt, PAFA was designated a National Historic Landmark in May 1975.

The **Pennsylvania Academy of the Fine Arts** (PAFA) was founded in 1805 as the first art school and art museum in the country.

From humble means, Dr. Albert C. Barnes became a medical doctor, invented a life-saving antiseptic, and used his wealth to amass a groundbreaking, world-renowned collection of art that became known as the **Barnes Foundation**, which challenged established norms.

One of the country's oldest art museums, the **Philadelphia Museum of Art** is recognized as one of the finest, opening for the Centennial Exhibition of 1876, the first official World's Fair in the U.S.

Use this guide to help you explore the artistic side of Philadelphia.

CONVENTION CENTER DISTRICT

Anchored by the Pennsylvania Convention Center, this bustling district offers great shopping, entertainment, dining, and cultural opportunities.

Tour the **Pennsylvania Academy of the Fine Arts**, the oldest art museum and art school in the nation, showcasing a vast collection of 19th- and 20th-century American paintings and sculptures.



Snap a selfie in front of Robert Indiana's iconic **LOVE sculpture** in LOVE Park.

Explore the **Rail Park**, a former railroad viaduct converted into a scenic trail.

Visit the **Fabric Workshop and Museum**, a modern art exhibition space, whose unique artist-in-residence program has resulted in an archive of one-of-a-kind collaborations with internationally renowned artists.

Schedule a tour of the majestic **Masonic Temple of Philadelphia**, a National Historic Landmark and architectural wonder, and the headquarters of the Grand Lodge of Pennsylvania, Free and Accepted Masons.

Take a tour of **City Hall**, home to over 250 sculptures by Alexander Milne Calder, including the largest statue atop any building in the world.

On the Southern apron of City Hall, is **A Quest for Parity: The Octavius V. Catto Memorial** by artist Branly Cadet. One of the most influential African American leaders in Philadelphia during the 19th century, Catto contributed to forever amending the United States Constitution with his work toward the ratification of the 13th, 14th and 15th Amendments.



"A Quest for Parity: The Octavius V. Catto Memorial," Branly Cadet, 2017.

HIDDEN GEM

Art at the Pennsylvania Convention Center

If you're attending an event at the Pennsylvania Convention Center, be sure to sneak away to check out these hidden gems. Showcased through the building, the Center's art collection contains a variety of styles, techniques, and mediums from Pennsylvanian artists. Standouts include a tile mosaic of Philadelphia's City Hall from 1964 and "The Large Sway of Public Opinion", a kinetic sculpture by Bradley Litwin.

CHINATOWN



Sabrina Soong, a local architect, along with a team of engineers and artisans from the Chinese city of Tianjin, built this iconic 88-ton arch.

Walk under the **Friendship Gate**, a gift from Philadelphia's sister city of Tianjin, which welcomes visitors to **Chinatown**.

Stop into the **Asian Arts Initiative**, a multidisciplinary arts center exploring the diverse communities of Asian Americans with exhibitions, performances, artist residencies, youth workshops, and a community gathering space.

Visit **Wonderspaces**, a futuristic gallery space home to a collection of rotating interactive and immersive art installations.

Explore the **African American Museum in Philadelphia**, the first institution built by a major U.S. city to house and interpret the life and work of African Americans.



Opened during the 1976 Bicentennial celebrations, the African American Museum in Philadelphia is located in historic Philadelphia on Arch Street, a few blocks away from the Liberty Bell.

OLD CITY, SOCIETY HILL & WATERFRONT

Discover America's spirit in the city where it all began at **Independence National Historical Park**, home to iconic sites like the **Liberty Bell** and **Independence Hall**. Stroll along quaint cobblestone streets filled with architectural wonders and explore trendy boutiques and art galleries.

Learn more about how Philadelphia started as the cultural center of the "New World" in the late 1700s at the **American Philosophical Society**, established by Benjamin Franklin as an organization devoted to the "promotion of useful knowledge," which became a home for critical thinkers to gather and share ideas.

The **Second Bank of the United States**, in a stunning Greek Revival building, houses a free portrait gallery.

Take in a show at **Arden Theatre Company**, producing plays in the heart of the neighborhood since 1988.

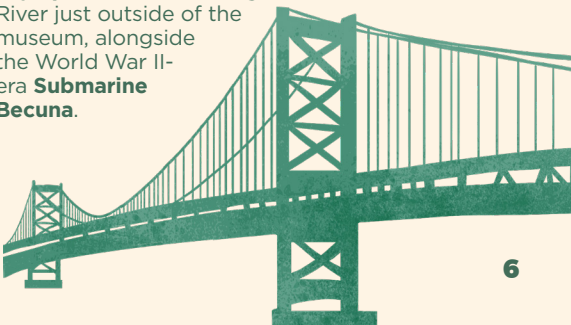
On the waterfront, **FringeArts**, the 300-seat theatre offers year-round genre-defying dance, theater and music performances by emerging innovators who push the boundaries of art-making.

Stay for dinner at indoor/outdoor **La Peg** and catch live shows from bands to pop-up shows to cabarets, plus a late-night menu.

Explore **Cherry Street Pier**, a year-round, mixed-use public space built into the shell of a century-old municipal pier, home to artists and creators.

Learn about the waterways throughout the Philadelphia region at the **Independence Seaport Museum**.

The National Historic Landmark ship, **Cruiser Olympia**, is docked along the Delaware River just outside of the museum, alongside the World War II-era **Submarine Becuna**.





The National Liberty Museum's signature centerpiece is the Flame Gallery which features the 21-ft Flame of Liberty by renowned glass sculptor, Dale Chihuly.

OLD CITY MUSEUMS

The **National Constitution Center** contains multimedia exhibits, performances, and historical artifacts.

The **Faith and Liberty Discovery Center** examines how faith fostered the nation's core values.

The **Weitzman National Museum of American Jewish History** preserves and celebrates the history of Jewish life in America.

The **African American Museum in Philadelphia** interprets the life and work of African Americans.

The **National Liberty Museum's** glass gallery inspires visitors to think about the fragility of liberty and how to preserve it.

The **Museum of the American Revolution** shares stories that sparked America's ongoing experiment in liberty.

Indulge in 200 years of water analysis and protection in the U.S. at the **Science History Institute**.

Elfreth's Alley Museum shows the history of the oldest continuously inhabited residential street in the nation.

OLD CITY GALLERIES

- **Wexler Gallery:** Showcasing contemporary craft, design and fine art.
- **Larry Becker Contemporary Art:** Exhibiting contemporary paintings.
- **Muse Gallery:** An artists' cooperative highlighting Philadelphia artists.
- **Pentimenti Gallery:** Displaying contemporary, international artists.
- **Arch Enemy Arts:** Exhibiting emerging and established local and international artists.
- **Museum for Art in Wood:** Showcasing one of the most extensive collections of contemporary art in wood.

PARKWAY MUSEUMS DISTRICT & FAIRMOUNT

Philadelphia's collection of art museums is located along the Benjamin Franklin Parkway, dubbed "Museum Mile" and modeled after the Champs-Élysées in Paris. Some of the city's most famous sights can be found here, with the Swann Memorial Fountain in Logan Circle as the centerpiece.

The **Philadelphia Museum of Art** is a striking, neoclassical structure that sits at the top of the Parkway, holding more than 2,000 years of paintings, sculptures, decorative arts, and architectural settings from Europe, Asia, and the Americas.

The Thinker sits in front of the **Rodin Museum**, which houses one of the largest collections of the French sculptor's works outside Paris.

Founded in 1848 as the first and only women's visual arts college in the nation, Moore College of Art and Design was established.

The Galleries at Moore introduce the work of significant regional, national, and international artists to the community through distinctive exhibitions and educational programs and is open to the public, free of charge.

The **Free Library of Philadelphia** sits in a grand Beaux-Arts building designed by Julian Abele. Special collections include a rare book department and an extensive research collection of children's literature published after 1836.



The Thinker by Auguste Rodin is a cast of the 1902-1904 version.

Nearby, the **Comcast Experience** features one of the world's largest LED continuous video walls in the lobby of the Comcast Center, plus the Universal Sphere in the Upper Lobby.

Visit **Eastern State Penitentiary**, the historic prison kept in "preserved ruin," and stroll through its crumbling halls to learn about former inhabitants, including Al Capone, with an audio tour voiced by actor Steve Buscemi.



DON'T MISS!

The Barnes Foundation

Dr. Albert C. Barnes amassed one of the world's most important collections of post-impressionist and early modernist art, between 1912 and 1951. He also gathered African sculpture, antiquities, Asian art, Native American ceramics, jewelry, and textiles, manuscripts, old master paintings, and European and American decorative and industrial arts and arranged them in "ensembles." Rather than by chronology, style or genre, the arrangements would be for the purposes of symmetry, or light, color and space, instead. By experimenting with the display, he challenged the traditional norms of viewing fine art, providing a new way to experience it.



ROCKY

A. Thomas Schomberg

The Rocky movies are known the world over and no trip to Philadelphia is complete without a visit to the Rocky steps and the Rocky statue at the Philadelphia Museum of Art.



AMOR SCULPTURE

Robert Indiana

In 2015, to honor Pope Francis' visit to Philadelphia for the World Meeting of Families, Robert Indiana's AMOR sculpture was brought to Philadelphia. The piece is an alternate take on the artist's iconic LOVE sculpture - featuring the word "Amor," which means "Love" in Pope Francis' native Spanish.



THE FATHER, THE SON AND THE HOLY GHOST

The Calder

The artwork of the Calder family of sculptors punctuates the Benjamin Franklin Parkway from start to finish. The patriarch, Alexander Milne Calder, emigrated from Scotland to the U.S. in 1868 and settled in Philadelphia. He is best known for the immense bronze statue of Philadelphia founder William Penn, placed on top of City Hall in 1894 - the largest in the world atop a public building. His son, Alexander Stirling Calder, was an accomplished sculptor who created the Swann Fountain in Logan Square. Also called Fountain of Three Rivers, the art deco sculpture was created in 1924 and features Native American subjects that represent the Delaware, Schuylkill, and Wissahickon Rivers. Visit the Philadelphia Museum of Art to see a kinetic mobile by the third generation, Alexander "Sandy" Calder, who invented the mobile. Ghost flies above the great Stair Hall. Tip: Look out the window on the top floor of the front of the museum to see all three Calder pieces of the family affectionately known as the "Father, the Son and the Holy Ghost."

EXPLORE FAIRMOUNT PARK



The 9,200 acres of the Fairmount Park system include 63 individual parks and historic buildings like Shofuso Japanese House and Garden.

One of the country's largest urban park systems, with 2,000-plus green acres, Fairmount Park is a vast outdoor playground with 63 individual parks and countless trails, more than 200 historic buildings, an impressive collection of public art, the country's first zoo, and more.

Take a "Museum Without Walls" audio tour on bike or by foot, courtesy of the **Association for Public Art**.

Visit **Shofuso Japanese House and Garden**, built in Japan in 1953 using traditional techniques and materials and moved to Philadelphia on the site of several previous Japanese structures, continuously maintained since the 1876 Centennial Exposition.

RITTENHOUSE SQUARE

Named for the beautifully landscaped park at its center, Rittenhouse Square is known for its historic architecture, fine dining, and designer boutiques.



Since 1924, the internationally renowned **Curtis Institute of Music** trained the likes of Leonard Bernstein and Samuel Barber and offers student recital series, Curtis Symphony Orchestra, Curtis Opera Theatre, family concerts, and more.

For over 75 years, gifted opera singers from around the world have trained at the **Academy of Vocal Arts**, with live performances throughout the year.

Peruse contemporary prints and photography at **The Print Center** and **The Center for Emerging Visual Artists** offering exhibits, events, and art for sale.

See the country's finest collection of medical artifacts housed at the **Mütter Museum**, featuring anatomical specimens, models, and medical instruments displayed in a Victorian "cabinet museum" setting.



The **Rosenbach Museum** holds the private collection of noted rare book dealers the Rosenbach brothers, including the only surviving copy of Benjamin Franklin's first *Poor Richard's Almanack* and Bram Stoker's notes for *Dracula*.

Plays and Players, one of the oldest theater companies in the United States, presents a wide array of performance art throughout the year. The **Philadelphia Art Alliance** presents cutting-edge contemporary art.

Listen to live jazz and enjoy cocktails in an intimate setting at the **Library Jazz Bar** in the Rittenhouse Hotel or settle in for an evening of live jazz at **Chris' Jazz Café**.

FUN FACT

Lion Crushing Serpent sculpture in Rittenhouse Square is a bronze cast of the original piece by Antoine-Louis Barye, which is in the Louvre and is an allegory for the French Revolution, with the lion symbolizing the power of good and the serpent representing evil.



The 1898 mansion was originally Alexander Van Rensselaer's home and later Penn Athletic Club's clubhouse. In 1982, Anthropologie's predecessor, Urban Outfitters, moved into the three-story building.

HIDDEN GEM

Stop into Anthropologie, housed in a 1898 Beaux Arts Mansion. The store has a beautiful staircase, stunning architectural details, including an ornate stained glass dome, elaborately tiled fireplace, and one floor with a ceiling featuring gold circular frames with paintings of Italian royalty.

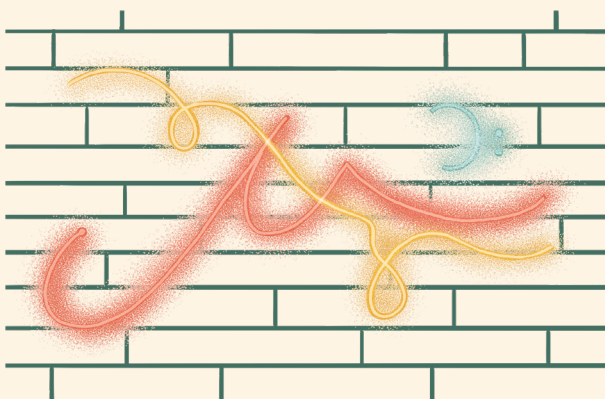
AVENUE OF THE ARTS

Many of Philadelphia's most prestigious cultural venues and nightlife are located on or near South Broad Street, known as the Avenue of the Arts. The arts and culture hub is home to some of the city's most notable performing arts institutions. Eat at one of the many spots along South Broad Street or take in breathtaking views high atop the Bellevue Hotel, one of the city's highest restaurants.

Attend a performance by Philadelphia's renowned ballet company, **Philadelphia Ballet**, started in 1963 by George Balanchine protégée Barbara Weisberger, and considered one of America's leading ballet companies, performing at the **Academy of Music**, the oldest opera house in the United States.

The **Kimmel Cultural Campus** is Philadelphia's premier performing arts center and home of the internationally acclaimed **Philadelphia Orchestra**, also presenting Broadway shows, cabaret, dance, opera, comedy, jazz, pop/rock, gospel and Latin music.

The **Wilma Theater** offers cutting edge, provocative plays by American and international dramatists.



Founded in 1966 by Philadelphia's African American musicians' union, including jazz legends John Coltrane, Dizzy Gillespie, Jimmy Smith, Grover Washington Jr. and Nina Simone, **Philadelphia Clef Club of Jazz & Performing Arts** offers jazz performances along with music education programs.

Catch world premieres by contemporary playwrights onstage at the **Philadelphia Theater Company** at the **Suzanne Roberts Theater**.



Enjoy recitals and performances at the Caplan Center for the Performing Arts of the **University of the Arts**, one of the oldest art schools in the U.S. The **Philadelphia Film Center** hosts film screenings and is home to Philadelphia's largest movie screen.

Brandywine Workshop and Archives is a diversity-driven, nonprofit cultural institution that produces and shares art to connect, inspire, and build bridges among global communities.



Photo Credit: Paul Kolnik for PHLCVB.



Woodmere Art Museum¹ tells the story of Philadelphia's art and artists through a broad range of exhibitions, music events, classes, lectures, and programs.

The Chinatown **Friendship Gate²** was the first authentic Chinese gate built in America, representing a friendly exchange between Philadelphia and its sister city, Tianjin, China.



The **West Philadelphia Cultural Alliance**

operates the **Paul Robeson House and Museum**³,

which was the home of the internationally renowned American bass-baritone concert singer, actor, professional athlete, writer, multi-lingual orator, human rights activist, and lawyer.

South Street⁴ is long known as the edgiest street in Philadelphia; it is a melting pot of groups and cultures.

A Quest for Parity: The Octavius V.

Catto Memorial⁵ honors the activist who fought for the abolition of slavery and the desegregation of Philadelphia's trolleys.

Kimmel Cultural Campus⁶ is a large performing arts venue along the stretch known as the "Avenue of the Arts", in Center City.

Mütter Museum⁷ helps the public understand the mysteries and beauty of the human body and appreciate the history of medicine.

Philadelphia Museum of Art⁸ is the cultural heart of the city—the place for creative play, with a surprise around every corner.

Walnut Street Theater⁹, founded in 1808, is America's oldest theatre.

Weitzman National Museum of American Jewish History¹⁰ highlights the 360-year history of Jewish life in America.

City Hall¹¹ is the largest municipal building in the United States, containing over 14.5 acres of floor space. It is an architectural treasure inside and out.

Crane Arts¹² houses an array of artists' studios. This building plays host to rotating art displays and events.

WASHINGTON SQUARE WEST, MIDTOWN VILLAGE & GAYBORHOOD

Taking its name from the historic Washington Square Park, this quaint neighborhood is known for its lively dining spots and vibrant nightlife and serves as the epicenter of Philadelphia's LGBTQ+ community and home to some of the city's largest LGBTQ+ events and celebrations each year.

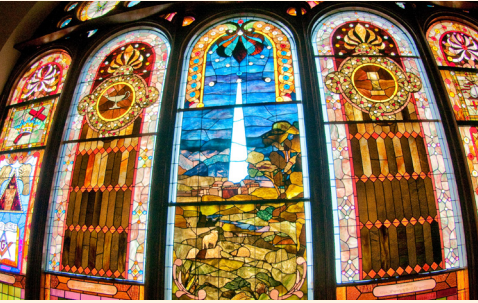
Explore the **Athenaeum of Philadelphia**, a historic library in an 1824 Italianate Renaissance building on Washington Square Park featuring special exhibits and architectural resources from 1800-1945.

Take in a show at the **Walnut Street Theater**, the oldest operating theater in the United States. **Lantern Theater**, a small innovative theater presents provocative classic, modern, and original works in St. Stephen's Church.

Locks Gallery represents an international group of critically acclaimed contemporary artists working in a variety of media, located in a historic Italianate Palazzo style building.



Giovanni's Room is the oldest LGBTQ+ and feminist bookstore in the country and a one-of-a-kind source for LGBTQ+ fiction and non-fiction books.



The stained glass windows were installed when Mother Bethel A.M.E. Church was erected in 1890.

Mother Bethel A.M.E. Church is the oldest property in the U.S. continuously owned by African Americans. The statue outside honors its founder, Richard Allen.

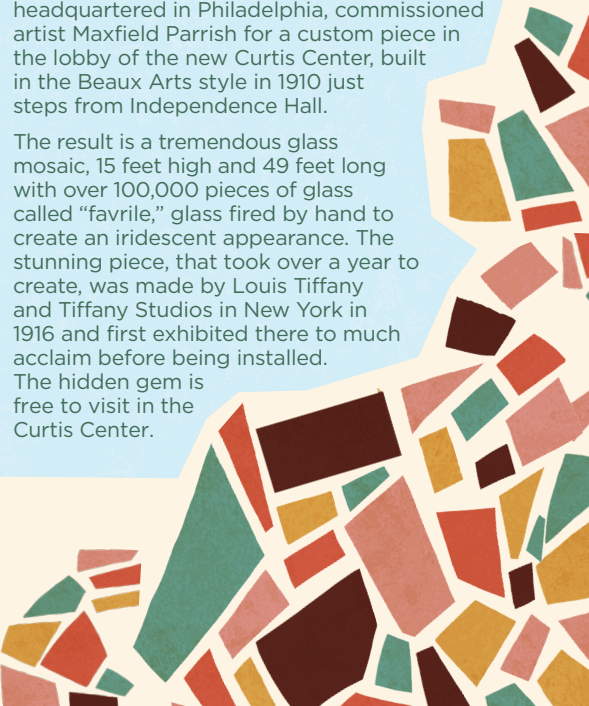
CraftNOW Philadelphia unites the leading institutions and artists of Philadelphia's community in a celebration of the city's rich legacy in the field, its internationally recognized contemporary scene, and its important role as an incubator for arts based in wood, clay, fiber, metal and glass.

HIDDEN GEM

Dream Garden

Edward Bok, senior editor at the Curtis Publishing Company in Philadelphia, headquartered in Philadelphia, commissioned artist Maxfield Parrish for a custom piece in the lobby of the new Curtis Center, built in the Beaux Arts style in 1910 just steps from Independence Hall.

The result is a tremendous glass mosaic, 15 feet high and 49 feet long with over 100,000 pieces of glass called "favre," glass fired by hand to create an iridescent appearance. The stunning piece, that took over a year to create, was made by Louis Tiffany and Tiffany Studios in New York in 1916 and first exhibited there to much acclaim before being installed. The hidden gem is free to visit in the Curtis Center.



SOUTH PHILADELPHIA

This vibrant, diverse section of the city is best known for its Italian Market of “Rocky” fame, nightlife on South Street, and innovative restaurants and shops along East Passyunk Avenue.

Walk along the eclectic **South Street** to explore an ever-changing lineup of galleries and shops including the **South Street Art Mart**, an artist-run retail shop and home to over 180 Philly-area artists and makers and check out the collection of street art on display at **Tattooed Mom**.

See a show at the **Theatre of Living Arts (TLA)**, a popular live music venue which originally opened in 1908 as a nickelodeon called the Crystal Palace.



Philadelphia’s Magic Gardens is known for its massive glittering mosaics and labyrinthine outdoor sculpture garden.

Get lost in **Philadelphia’s Magic Gardens**, a mixed media art environment completely covered with mosaics created by Philadelphia artist Isaiah Zagar.

DaVinci Art Alliance features solo and group exhibitions of area artists. **Paradigm Gallery** shows contemporary art from around the world.

Deja 42 Art Gallery presents contemporary painting, sculpture, photography and prints. **Third Street Gallery** is an artist cooperative exhibiting the art of its members.

In FDR Park, the **American Swedish Historical Museum** - the oldest Swedish museum in the United States - was designed to look like a 17th century Swedish castle. The building is a tribute to Swedish influence in Philadelphia, which dates back to the 1600s.

Visit the **Bok Building**, a mixed-use space filled with artist studios and other small businesses and enjoy the sunset against the Philadelphia skyline atop the **Bok Bar**.

Learn about the history of the annual Mummers Parade in Philadelphia - the oldest continuous folk parade in the United States - and the many different divisions of Mummers at the New Year's Shooters and **Mummers Museum**.

The **Mario Lanza Institute & Museum** houses a large collection devoted to the South Philadelphia-born tenor who rose to great heights in the 1940s and 50s in the movies and on the concert stages of the world.

Home to what is considered the number one car collection in the world by the National Headquarters of the Automobile Club of France, the **Simeone Foundation Automotive Museum** houses over 75 historically significant vehicles, including makes from Ferrari, Bugatti, Porsche, Ford, Alfa Romeo, and others.

HIDDEN GEM

The Life of Moses by Violet Oakley at Fleisher Art Memorial

Fleisher Art Memorial in South Philadelphia, one of the oldest nonprofit community art schools in the U.S., has been offering free and low-cost art classes for all ages in the spirit of Samuel S. Fleisher (1871-1944), an advocate for public art education. Impressed by Violet Oakley's murals for the Pennsylvania Supreme Court at the Sesquicentennial Celebration in Philadelphia in 1926, Fleisher commissioned her to design an altarpiece with a similar theme for the church sanctuary.

FUN FACT

The Singing Fountain on East Passyunk Avenue is a popular pocket park with hidden speakers around the square that allows the fountain to "sing."

Eat at Victor Café where the servers double as opera singers, performing every 20 minutes.

UNIVERSITY CITY & WEST PHILADELPHIA

A hub for higher education, this neighborhood is home to top universities, including Drexel University and the University of Pennsylvania. University City is also home to museums, galleries, festivals, and performance spaces.

On the **University of Pennsylvania** campus, explore priceless archaeological artifacts from around the globe — including the largest Sphinx in the Western Hemisphere — at the **Penn Museum**.

Take in a theater, dance or world-music performance at **Penn Live Arts** and view installations from up-and-coming artists at the **Institute of Contemporary Art**, which hosted Andy Warhol's first solo museum show in 1965.



Excavated in 1913, the Penn Museum's 13-ton sphinx is the largest sphinx in the Western Hemisphere. Photo credit: Raffi Berberian.

The **Esther Klein Gallery** uses the creative arts as a platform to explore the relationships between art, science and technology. The gallery at the University City Science Center is home to exhibitions, artist talks, panel discussions, performances and special events.



Visit the Black-owned **Urban Art Gallery** and showcase space and take a guided tour of the **Paul Robeson House and Museum**.

Catch a program or film at **Scribe Video Center**, founded in 1982 as a place where individuals and communities could learn media making and explore the use of video as both an artistic medium and as a tool for progressive social change.

Take in a live music show at **World Café Live**.

NORTHERN LIBERTIES, FISHTOWN, KENSINGTON & NORTH PHILADELPHIA

Just north of Center City, these diverse neighborhoods are home to eclectic restaurants, landmark gastropubs, craft breweries and distilleries, and popular live-music venues.

Peruse and purchase literature that celebrates female writers, activists and artists at Black-owned **Harriett's Bookshop** along Girard Avenue in Fishtown.

Visit **Fabrika**, a dinner theater that spans two floors, with three bars and hosts nightly performances including circus and cabaret acts, live music and more.

Enjoy more live entertainment at **Underground Arts, Union Transfer, Silk City, Franklin Music Hall, Johnny Brenda's, The Fillmore, The Met Philadelphia, Kung Fu Necktie** or **Brooklyn Bowl**.

The **Clay Studio** celebrates the art of ceramics and sculpture with studios, classrooms and exhibition space.



Crane Arts has four floors of galleries and **Corridor Contemporary International** specializes in local contemporary art.

Stop into **TILT, the Institute for the Contemporary Image** and **Taller Puertorriqueño**, with a gallery dedicated to Puerto Rican and Latinx Art, highlighting contemporary artists from Philadelphia, the nation, and Puerto Rico.



The multi-colored façade of Taller Puertorriqueño references the colorful palette of households in the surrounding community.

NORTHWEST PHILADELPHIA

The vibrant neighborhoods of Northwest Philadelphia feature wooded trails, historic sites and booming business districts with local shops, eateries and bars.

Book a tour at **The Colored Girls Museum**, a memoir museum that honors the stories, experiences, and history of Black and Brown girls.

Tour the **Johnson House Historic Site**, once a station along the Underground Railroad. Visit the **Lest We Forget Slavery Museum** to learn about the injustice of slavery and its continuing impact on American ideals by way of rare artifacts, documents, memorabilia and exhibits.

Discover the beautiful gardens of the **Wyck House**. Take advantage of tax-free shopping at the boutiques and shops in quaint **Chestnut Hill** or along Main Street in **Manayunk**.

Admire rolling landscapes, a train display, and some of the city's rarest trees at the 92-acre **Morris Arboretum**.

Visit **Woodmere Art Museum** for engaging exhibits from Philadelphia-area artists.



Thousands of wooded plants, including many of Philadelphia's oldest, rarest and most magnificent trees, grow at the Morris Arboretum.



Housed in a 19th-century stone mansion on six acres in Chestnut Hill, Woodmere Art Museum is dedicated to the art and artists of Philadelphia.

HIDDEN GEM

Art at the Philadelphia Airport

Philadelphia shows you it's one of the premier art centers of the world as soon as you land. Art is exhibited all throughout the airport, including in the "Artport Lounge" located in Terminal F. This area features seven Philadelphia artists' work and even includes custom cornhole boards for passengers to play a quick game while they wait for their flights.

LIGHTS, CAMERA, ACTION!

Philadelphia has a rich cinematic and television pedigree from the past to the present. Scout out these 12 locations and re-enact the scenes that made these spots famous.

Fitler Square Park

23rd and Pine Streets

The tiny half-acre gem of a park is one of the main locations of M. Night Shyamalan's latest spooky series for Apple TV+, *Servant* starring Rupert Grint.

Fletcher Street Urban Riding Club

2607-11 W Fletcher Street

The non-profit organization devoted to inner-city horsemanship in North Philadelphia is featured in the 2020 Netflix film *Concrete Cowboy*.

La Colombe Fishtown

1335 Frankford Avenue

Season 5 of the popular lifestyle transformation show *Queer Eye* featured a host of Philadelphia neighborhoods and businesses, including La Colombe's flagship store.

William H. Gray III 30th Street Station

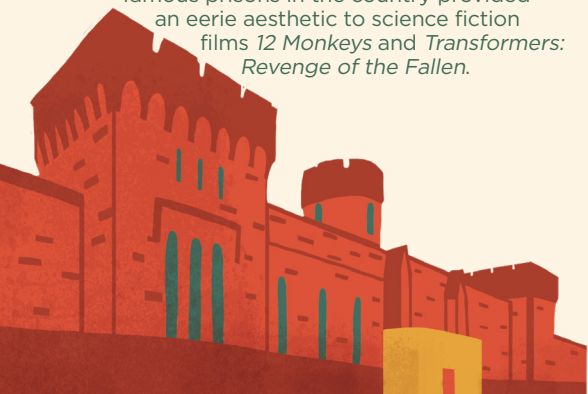
2955 Market Street

The art deco interior of this iconic railroad station lent a cinematic backdrop to scenes in *Witness*, *Split*, *Trading Places*, and *Blow Out*.

Eastern State Penitentiary

2027 Fairmount Avenue

The crumbling walls of one of the most famous prisons in the country provided an eerie aesthetic to science fiction films *12 Monkeys* and *Transformers: Revenge of the Fallen*.



Chinatown

10th and Arch Streets

Several parts of downtown Philadelphia, including Chinatown, stood in for New York City in the action-packed *21 Bridges*, one of the late Chadwick Boseman's last films.

Philadelphia Museum of Art

2600 Benjamin Franklin Parkway

The 72 stone steps leading to the museum entrance earned the nickname, the "Rocky Steps," after Sly Stallone's epic training run in *Rocky*. Be sure to snap a photo with the bronze Rocky statue at the base of the stairs.

Rittenhouse Square

18th and Walnut Streets

The charming, seven-acre park has made appearances in *The Happening*, *In Her Shoes*, *Rocky II*, and *Trading Places*.

City Hall

1400 John F Kennedy Blvd

An astonishing building perfect for the movies, City Hall makes appearances in *Philadelphia*, *National Treasure*, *Baby Mama*, *Law Abiding Citizen*, and *Limitless*.

Independence Hall

5th and Chestnut Streets

It's very fitting that this iconic site of America's birth provided a clue in Nicolas Cage's wild goose chase through early American history in *National Treasure*.

Kimmel Cultural Campus

300 South Broad Street

Home of the Philadelphia Orchestra, the majestic Kimmel Center was where Kevin Hart and Bryan Cranston enjoyed a concert in *The Upside*.

Italian Market

9th and Washington Streets

Numerous locations around Philadelphia, including the Italian Market, are used in Adam Sandler's recent Netflix basketball-themed film, *Hustle*, centered around a veteran talent scout for the 76ers.

LIVE MUSIC VENUES

- **Kimmel Cultural Campus**
300 S Broad St
Home to the Philadelphia Orchestra, the majestic Kimmel Center also hosts a variety of world pop and jazz performances.
- **Mann Center for the Performing Arts**
5201 Parkside Ave
A gorgeous outdoor amphitheater in Fairmount Park that hosts the Philadelphia Orchestra and other large touring acts in the summertime.
- **City Winery**
990 Filbert St
Combines music, wine, and great food in an intimate setting located in the Fashion District Philadelphia.
- **The Met Philadelphia**
858 N Broad St
Housed in a historic opera house, the Met Philadelphia has been modernized and transformed into the city's largest performance and theatrical stage.
- **Franklin Music Hall**
421 N 7th St
Formerly known as the Electric Factory, this large premiere indoor venue has welcomed top names in entertainment for over 40 years.
- **Underground Arts**
1200 Callowhill St
A two-room, 12,000 square foot venue designed to cultivate the local music scene, as well as to attract national and international talent.
- **The Fillmore Philadelphia (and the Foundry)**
29 E Allen St
This state-of-the-art, 2,500 capacity live music club in Fishtown is the perfect blend of class and cutting edge, and also contains the smaller 450-capacity Foundry club.
- **Theatre of Living Arts**
334 South St
A centerpiece of South Street for decades, the TLA is a classic venue with an eye-catching traditional marquee.
- **Silk City**
435 Spring Garden St
A classic diner with excellent food situated in Northern Liberties since 1954, Silk City also hosts local and emerging live music as well as late night dance parties.
- **Dell Music Center**
2400 Strawberry Mansion Dr
The fourth largest performance venue in Philadelphia is a beautiful outdoor amphitheater that is an institution for jazz, soul, rock and community events.
- **Dobbs on South**
304 South St
Small rock club once known as the "Legendary Dobbs."

- **Johnny Brenda's**
1201 Frankford Ave
 This bi-level, hip venue in the heart of Fishtown hosts local and nationally touring bands while serving up tasty food and craft beer.
- **MilkBoy (Chestnut St.)**
1100 Chestnut St
 A restaurant, bar, café, and live-music venue in the heart of Center City.
- **MilkBoy (South St.)**
401 South St
 MilkBoy South Street boasts elevated American fare, craft beers and frequent live performances including open mics, comedy, and local bands.
- **World Café Live**
3025 Walnut St
 A multi-stage venue that houses renowned independent radio station WXPB, World Café Live is an incubator for emerging artists and a home for local, national, and international acts.
- **Kung Fu Necktie**
1248 N Front St
 A mainstay of the local music scene, KFN is Fishtown's home for punk, metal, and late night dancing.
- **Ortlieb's**
847 N 3rd St
 An intimate bar with local acts, open mics, and karaoke.
- **Brooklyn Bowl Philadelphia**
1009 Canal St
 This combination bowling alley and music club is a brand-new space complete with a huge disco ball.
- **Liberty Point**
211 S Christopher Columbus Blvd
 Spacious live music stage and view of the Delaware River.
- **Union Transfer**
1026 Spring Garden St
 A historic building turned into a premiere concert venue.
- **Chris' Jazz Café**
1421 Sansom St
 Fantastic jazz spot with delicious southern-inspired cuisine.
- **Time**
1315 Sansom St
 Whiskey bar with three rooms, a restaurant, and daily live jazz music.
- **The Dolphin Tavern**
1539 S Broad St
 Known as one of the best dance clubs in Philadelphia.
- **Khyber Pass Pub**
56 S 2nd St
 Mouthwatering New Orleans-inspired fare and entertainment.
- **Leda & The Swan**
1224 Chestnut St
 Craft cocktails, stylish setting, and live music and DJs.

TAKE AN ART TOUR



Get to know the city's stunning collection by taking a public tour with various credible organizations that can expose you to street art and fine art and everything in between.

Check out these organizations that offer incredible art tours around Philadelphia:

- Mural Arts Tours
- Public art tours with Association for Public Art
- Architecture tours with the Preservation Alliance & The Constitutional Walking Tour
- Art & Activism tour with Beyond the Bell Tours
- Street art tours with @StreetsDept
- South Philly art tour with WeVenture



It's no wonder Philadelphia is one of only three U.S. destinations – and one of only eight destinations around the globe – to make Condé Nast Traveler's 2021 Gold List. The publication asserts, "there's really something special about Philadelphia," citing the city's incomparable public art. Philadelphia was also named as one of 11 cities around the world that are home to "Must-See Public Art," per Travel + Leisure's 2022 list, which cites iconic sculptures such as LOVE and Rocky, as well as the work done by Mural Arts Philadelphia and the Association for Public Art.

Explore our museums and galleries – indoor and out. Enjoy ballet, theater, live music and much more. Whatever you want to do, Philadelphia is here to inspire the art lover in you.

Find all the attractions, galleries and sites listed in this guide at [DiscoverPHL.com](https://www.discoverphl.com).



Founded in 1989, Chris' Jazz Café is the longest continuously operating jazz club in the history of Philadelphia, attracting visitors from more than 160 countries and all 50 states.





PHLCVB
Philadelphia Convention
& Visitors Bureau